

OSCALETURNOUTS™, INC.

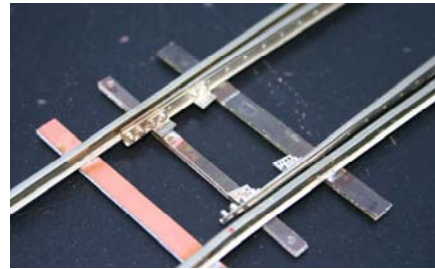
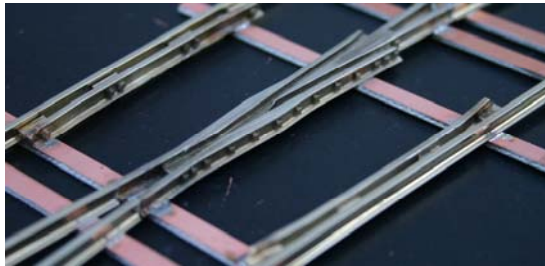
"Ready to Lay on your Right of Way™"

Updated: 3/1/2020

OscaleTurnouts™, Inc., a Michigan Corporation, was formed in 2012 to offer the O-scale 2-rail community (¼ scale and P48), an engineered, high quality and prototypical looking turnout that will outperform any ready to run store bought turnout at an affordable price.

Features:

- Designed to the NMRA **S-3.2 (Feb. 2010)** Standard, A.R.E.A. Manual for Railway Engineering and 1921 Maintenance of Way Standards.
- Constructed using our own designed, precision milled fabrication jigs.
- **Rail and Trackwork Supplies™** (www.ratsna.com) cast frog, guard rails and points for a prototypical appearance.



- 11-PC ties resistance soldered to the rail to insure precise track gauge.
- Solid (non-hinged) Points.
- Staggered rail ends.
- Diverging stock and frog rails extended (#8, #10) for single cross-over application on 4" centerline.
- DC / DCC compatible.
- Insulated Frog.
- Point rails electrically connected to the stock rails.
- Prototypical tie spacing.
- Proudly manufactured in the United States by American Citizens.

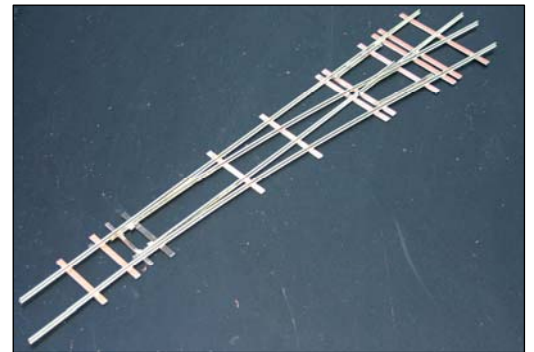
Updated: 3/1/2020

Turnout Configurations:

OscaleTurnouts™ offers three (3) turnout configurations:

1. Base (PC)

- 11 - PC ties resistance soldered to the Nickel Silver rail.
- **RATS** cast frog, guard rails and points.
- Insulated frog
- DC / DCC compatible.
- Ready to lay on wood ties (ties not included)



2. Ready to Lay™ (RL)

The Ready-to-Lay™ configuration is for the modeler who wants the closest thing to a store bought turnout.

The **Ready to Lay™ (RL)** turnout includes:

- Base (PC) turnout.
- Stained wood ties (water soluble) glued to the rail.
- Painted PC ties.
- Scale ties.
- Prototypical tie spacing.
- 18ga. feeder wire soldered to the frog (**optional @ \$5.00 per turnout**).



3. Detail Kit (SD)

This kit is designed for the modeler who wants to create a super detailed turnout. **Assembly required.**

The **Detail Kit (SD)** includes:

- Base (PC) turnout.
- Un-stained wood ties, pre cut to length.
- Tie plates: 14" and 24" (plastic).
- Bridge assembly (plastic).
- Rail braces (nickel silver).
- Joint Bars (plastic)

Updated: 3/1/2020

Product Line:

All turnouts are constructed using our own prototypical profiled nickel silver, non-weathered rail.

- **Current Offerings** (as of 3/1/2020)

- ★ **Code 100**

- #6 Right – Bolted Frog.
- #6 Left – Bolted Frog.

- ★ **Code 125**

- #6 Right – Bolted Frog.
- #6 Left – Bolted Frog.
- #6 Wye – Bolted Frog.
- #8 Right – Rail-bound Frog.
- #8 Left – Rail-bound Frog.

- ★ **Code 148**

- #5 Right – Rail-bound Frog. (designed to replace the Atlas variant)
- #5 Left – Rail-bound Frog. (designed to replace the Atlas variant)
- #6 Right – Rail-bound Frog.
- #6 Left – Rail-bound Frog.
- #6 Wye – Bolted Frog.
- #6 Lap (3-way) – Rail-bound Frog.
- #7.5 Right – Rail-bound Frog. (designed to replace the Atlas variant)
- #7.5 Left – Rail-bound Frog. (designed to replace the Atlas variant)
- #8 Right – Rail-bound Frog.
- #8 Left – Rail-bound Frog.
- #10 Right – Rail-bound Frog.

Updated: 3/1/2020

★ **Code 148**

- #10 Left – Rail-bound Frog.
- 60"/84" Curved Left – Rail-bound Frog.
- 60"/84" Curved Right – Rail-bound Frog.
- #8 Crossing (7.15°) – Rail-bound Frogs.
- #8 Double Slip (7.15°) – Rail-bound Frogs.
- #8 Double Cross Over – Rail-bound Frogs

★ **P48 Code 100**

- #6 Right – Bolted Frog.
- #6 Left – Bolted Frog.

★ **P48 Code 125**

- #8 Right – Rail-bound Frog.
- #8 Left – Rail-bound Frog.
- #10 Right – Rail-bound Frog.
- #10 Left – Rail-bound Frog.

● **Future**

- ★ #4 Wye – Rail-bound Frog.
- ★ #6 Left/Right – Rail-bound Frog, Code 125.
- ★ #6 Double Slip – Rail-bound Frogs, Code 148
- ★ #8 Lap (3-way) – Rail-bound Frogs, Code 148
- ★ P48 #6 Left/Right – Rail-bound Frog, Code 125
- ★ P48 #7 Left/Right – Rail-bound Frog, Code 125.

● **Custom Runs**

OscaleTurnouts™ welcomes all custom applications. Price and delivery will depend upon the complexity of the design and the quantities required.

OSCALE TURNOUTS™, INC.

"Ready to Lay on your Right of Way™"

Updated: 3/1/2020

Price (Code 100):

- Base (PC)
- Ready to Lay™ (RL)
- Detail Kit (SD)

| #6 |
|-----------|
| \$ 95.00 |
| \$ 110.00 |
| \$ 142.00 |

Price (Code 125):

- Base (PC)
- Ready to Lay™ (RL)
- Detail Kit (SD)

| #6 | #8 |
|-----------|-----------|
| \$ 86.00 | \$ 93.00 |
| \$ 102.00 | \$ 109.00 |
| \$ 134.00 | \$ 141.00 |

Price (Code 148):

- Base (PC)
- Ready to Lay™ (RL)
- Detail Kit (SD)

| #5 | #6 | #6 Lap |
|-----------|-----------|-----------|
| \$ 86.00 | \$ 86.00 | \$ 265.00 |
| \$ 102.00 | \$ 102.00 | \$ 300.00 |
| \$ 134.00 | \$ 134.00 | \$ 340.00 |

- Base (PC)
- Ready to Lay™ (RL)
- Detail Kit (SD)

| #7.5 | #8 | #10 | 60"84" Curved |
|-----------|-----------|-----------|---------------|
| \$ 95.00 | \$ 93.00 | \$ 95.00 | \$ 99.00 |
| \$ 110.00 | \$ 109.00 | \$ 110.00 | \$ 120.00 |
| \$ 141.00 | \$ 141.00 | \$ 143.00 | \$ 147.00 |

- Base (PC)
- Ready to Lay™ (RL)

| #8 Crossing | #8 DBL Slip | #8 DBL Cross Over |
|-------------|-------------|-------------------|
| \$ 265.00 | \$ 450.00 | \$ 650.00 |
| \$ 290.00 | \$ 475.00 | NA |

OSCALETURNOUTS™, INC.

"Ready to Lay on your Right of Way™"

Updated: 3/1/2020

P48 Price (Code 100):

- Base (PC)
- Ready to Lay™ (RL)
- Detail Kit (SD)

| #6 |
|----------|
| \$95.00 |
| \$110.00 |
| \$142.00 |

P48 Price (Code 125):

- Base (PC)
- Ready to Lay™ (RL)
- Detail Kit (SD)

| #8 | #10 |
|-----------|-----------|
| \$ 99.00 | \$ 102.00 |
| \$ 115.00 | \$ 117.00 |
| \$ 147.00 | \$ 149.00 |

Prices subject to change without prior notice.
U.S. Dollars.
F.O.B. Hamburg, Michigan.

Terms:

- PayPal (family and friends)
- Credit Card (3% processing fee)
- Bank Cashiers Check
- Postal Money Order
- No C.O.D.

Distribution Channels:

- Direct
- Ebay – under the name of "oscaleturnouts"

OSCALE TURNOUTS™, INC.

"Ready to Lay on your Right of Way™"

Updated: 3/1/2020

Shipping and Handling:

- All turnout are shipped insured via US Priority Mail within 3 days (subject to inventory) after receipt of payment.
- All turnout are packaged in plastic bags that are taped to a plywood board and then placed in either a 28" x 6" x 6" or 36" x 8" x 8" cardboard box. Orders greater than 6 turnout may be packaged in multiple boxes.
- A handling fee is assessed on all orders. It includes the cost of "Insurance" and shipping supplies.



Contact:

Oscale Turnouts, Inc.
PO Box 818
Hamburg, MI 48139
810-231-4461
info@oscaleturnouts.com

Acknowledgements:

This project would not have been possible without the help of the following:

- Joe Giannovario (RIP), Publisher , O Scale Trains Magazine
- Louis Cross (RIP), Owner, Right-O-Way
- John Pautz, Founder, American Switch & Signal